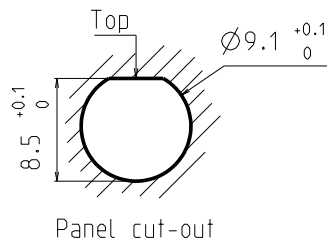
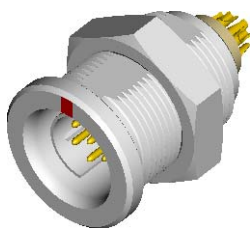


D 102 Multipole Receptacles

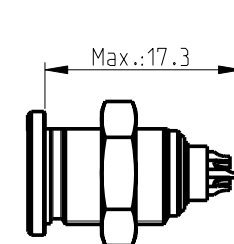
Contact polarity A



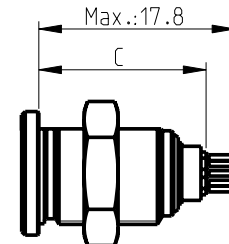
Contact polarity Z



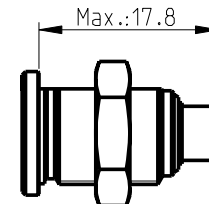
All dimensions see note 1)



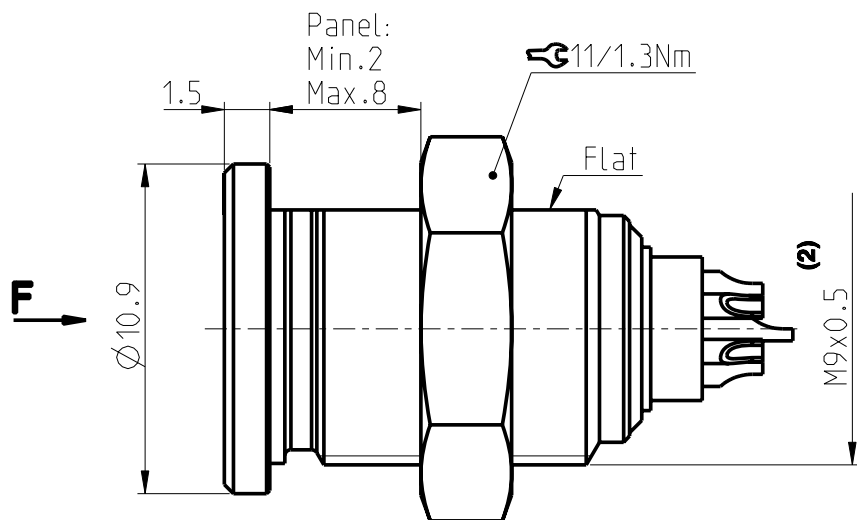
Solder (-x30/-x40)



PCB (-x39/-x49)

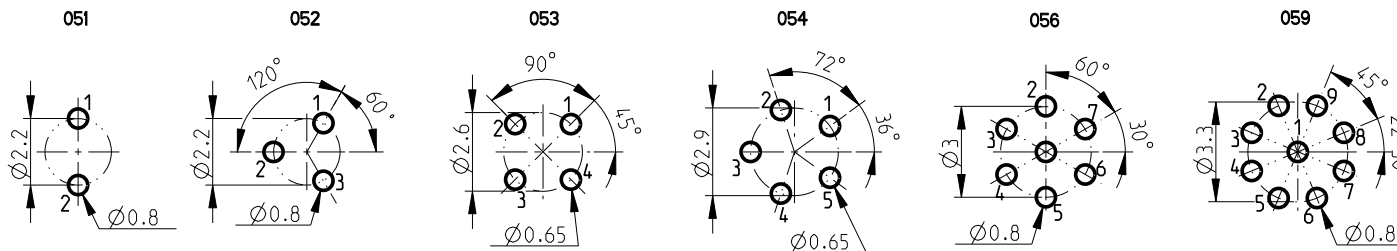


Crimp (-x50/-x60)⁽³⁾

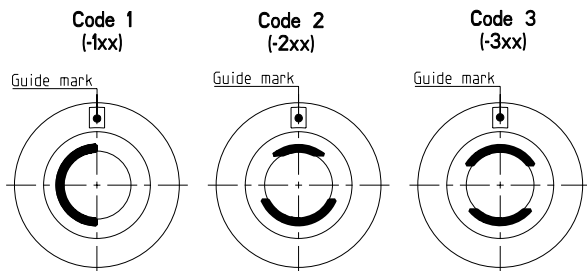


CONTACT CONFIGURATION	Contacts	Solder cup \varnothing	C	PIN \varnothing	Crimp cup \varnothing
102 A Z 051	2	0.79	14.4 14.6	0.63	-
102 A Z 052	3	0.79	14.4 14.6	0.63	-
102 A Z 053	4	0.79	14.8 16.3	0.50	0.60
102 A Z 054	5	0.79	14.8 14.1	0.50	0.60
102 A Z 056	7	0.43	14.8 14.1	0.63	0.43
102 A Z 059	9	0.43	14.8 14.1	0.63	-

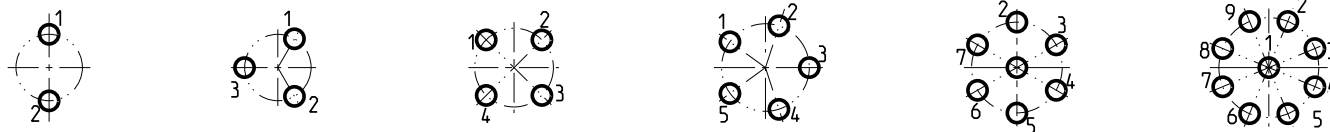
Pin layout / PCB hole pattern for polarity A - View from F ⁽⁴⁾



Keying codes (View from F)



Polarity Z - View from F



All dimensions in mm

600470

Rev.

2a

Pages

1/1

Notes:

- 1) All tolerances resulting from connector assembly are typically $\pm 0.3\text{mm}$
- 2) If receptacle is screwed directly into threaded hole, oversize thread by $+0.05\text{mm}$
- 3) For optimum crimping refer to available crimping manual.

4) Recommended PCB hole dimensions may be adjusted to application
 Part number example : D 102 A056-xxx

fischer
 CONNECTORS

www.fischerconnectors.com