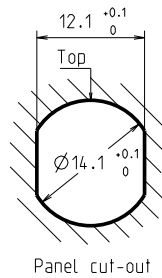
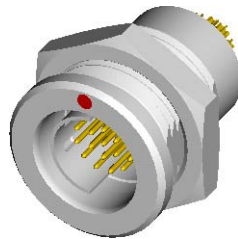
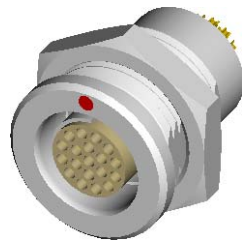


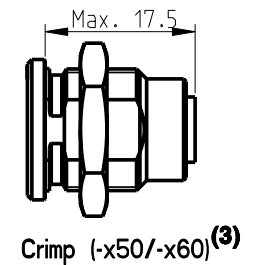
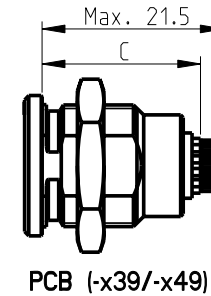
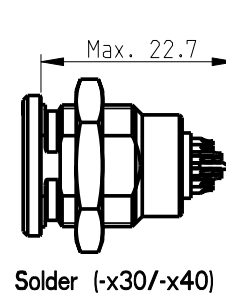
# D 1031 Multipole Receptacles

Contact polarity A

Contact polarity Z



All dimensions see note 1)

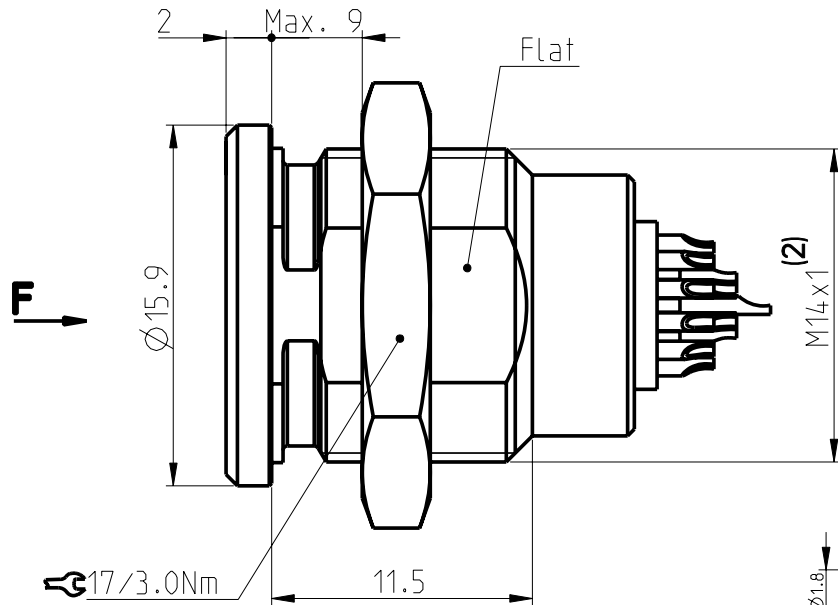


Solder (-x30/-x40)

PCB (-x39/-x49)

Crimp (-x50/-x60)<sup>(3)</sup>

Panel:  
Min. 2  
Max. 9

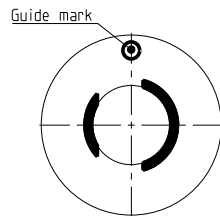
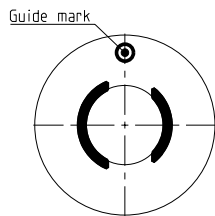
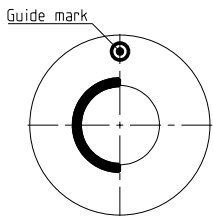


Keying codes (View from F)

Code 1  
(-1xx)

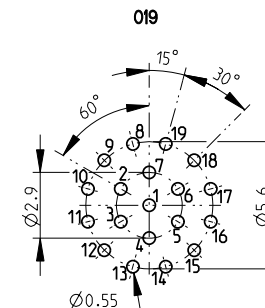
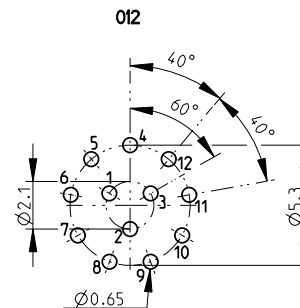
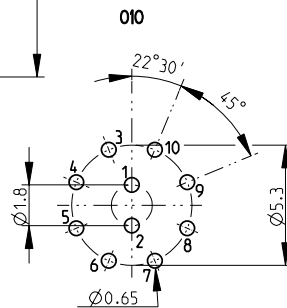
Code 2  
(-2xx)

Code 3  
(-3xx)

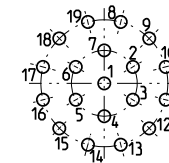
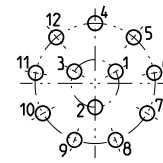
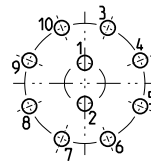


CONTACT CONFIGURATION	Contacts	Solder cup $\phi$	C	PIN $\phi$	Crimp cup $\phi$
1031 A Z 010	10	0.79	18.2 17.5	0.50	0.60
1031 A Z 012	12	0.79	18.2 19.0	0.50	0.60
1031 A Z 019	19	0.43	18.2 18.0	0.40	0.43

Pin layout / PCB hole pattern for polarity A - View from F <sup>(4)</sup>



Polarity Z - View from F



All dimensions in mm

Rev. 2a

Pages 1/1

Notes:

- 1) All tolerances resulting from connector assembly are typically  $\pm 0.3$ mm
- 2) If receptacle is screwed directly into threaded hole, oversize thread by +0.05mm
- 3) For optimum crimping refer to available crimping manual.

4) Recommended PCB hole dimensions may be adjusted to application  
Part number example : D 1031 A019-130

600483

2a

1/1

**fischer**  
CONNECTORS

www.fischerconnectors.com