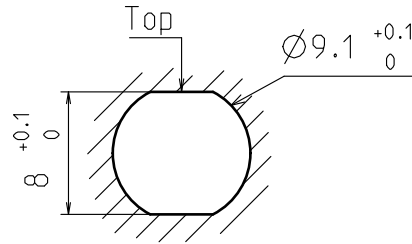
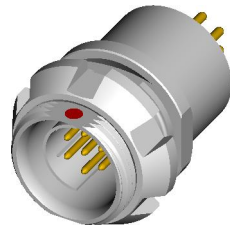
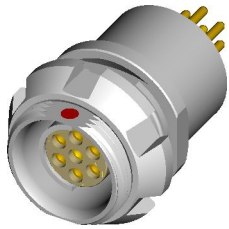


DBP 102 Multipole Receptacles

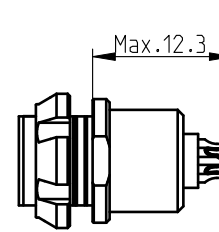
Contact polarity A

Contact polarity Z

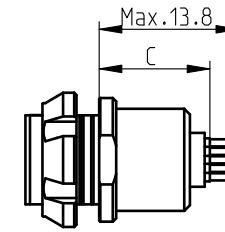


Panel cut-out

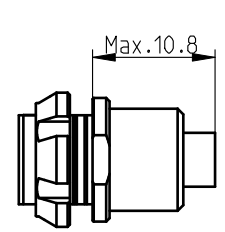
All dimensions see note 1)



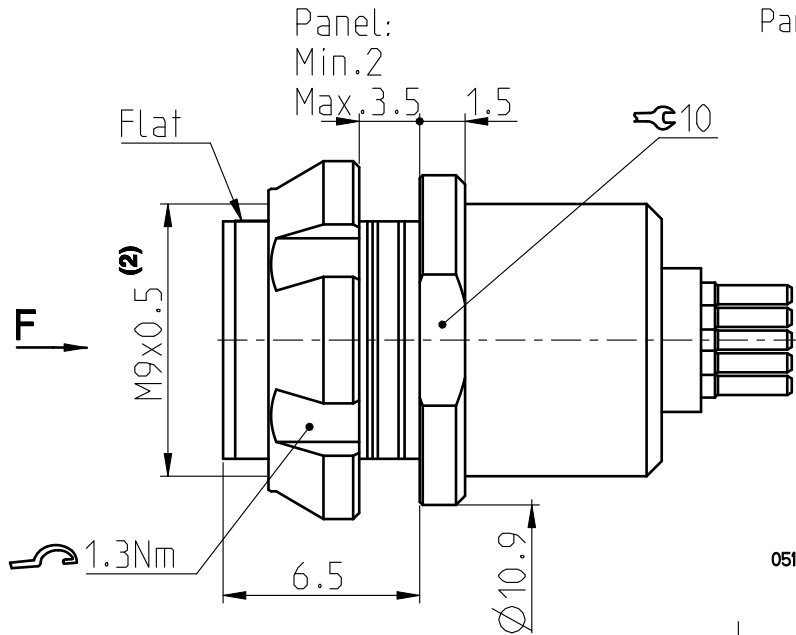
Solder (-x39/-x49)



PCB (-x30/-x40)

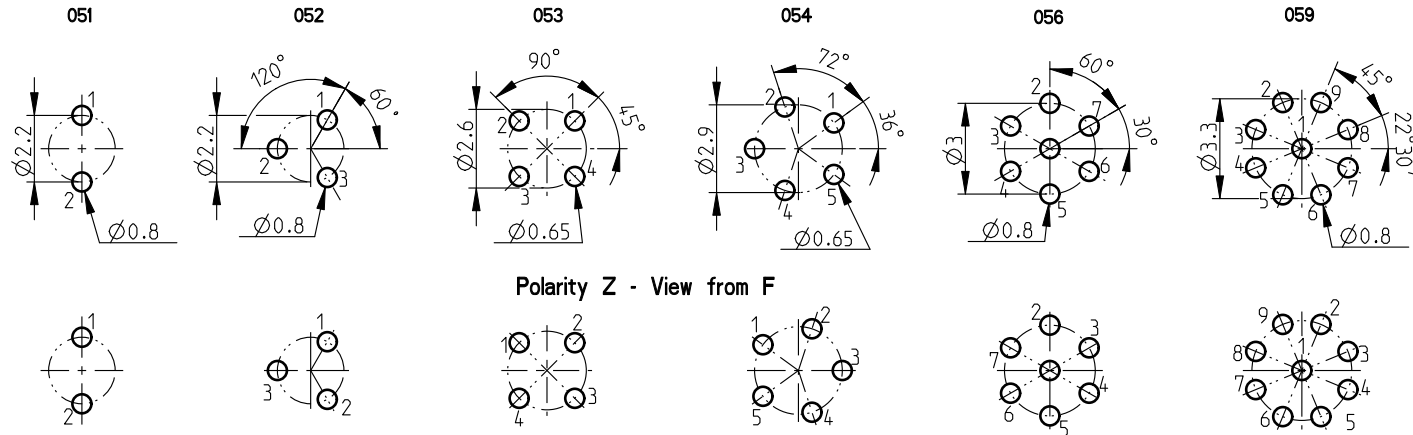
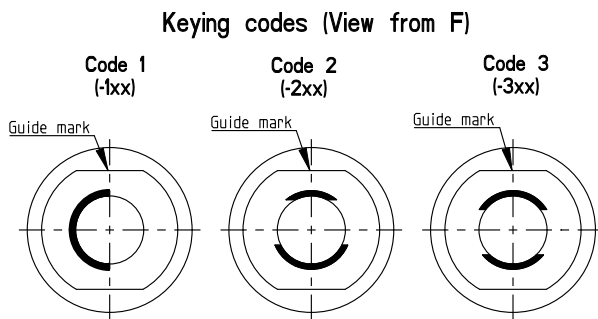


Crimp (-x50/-x60)⁽³⁾



CONTACT CONFIGURATION	Contacts	Solder cup ϕ	C	PIN ϕ	Crimp cup ϕ
102 A Z 051	2	0.79	9.4 9.6	0.63	-
102 A Z 052	3	0.79	9.4 9.6	0.63	-
102 A Z 053	4	0.79	9.8 9.1	0.50	0.60
102 A Z 054	5	0.79	9.8 9.1	0.50	0.60
102 A Z 056	7	0.43	9.8 9.1	0.63	0.43
102 A Z 059	9	0.43	9.8 9.1	0.63	-

Pin layout / PCB hole pattern for polarity A - View from F ⁽⁴⁾



Polarity Z - View from F

All dimensions in mm

600472

Rev.

2a

Pages

1/1

Notes:

- 1) All tolerances resulting from connector assembly are typically ± 0.3 mm
- 2) If receptacle is screwed directly into threaded hole, oversize thread by $+0.05$ mm
- 3) For optimum crimping refer to available crimping manual.

4) Recommended PCB hole dimensions may be adjusted to application
Part number example : DBP 102 A056-130

fischer
CONNECTORS

www.fischerconnectors.com