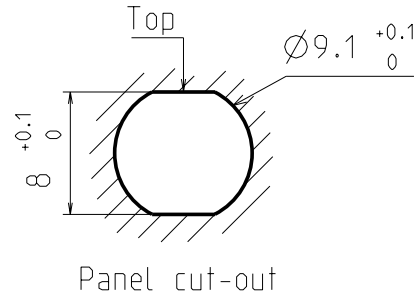
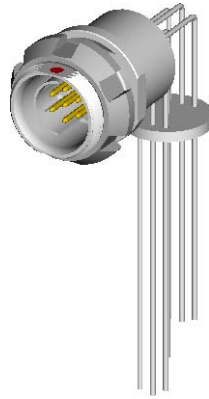
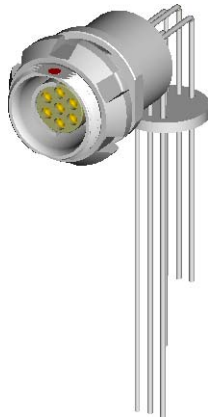


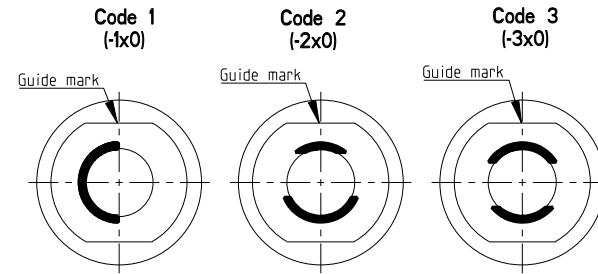
DBPC 102 Multipole Receptacles

Contact polarity A

Contact polarity Z

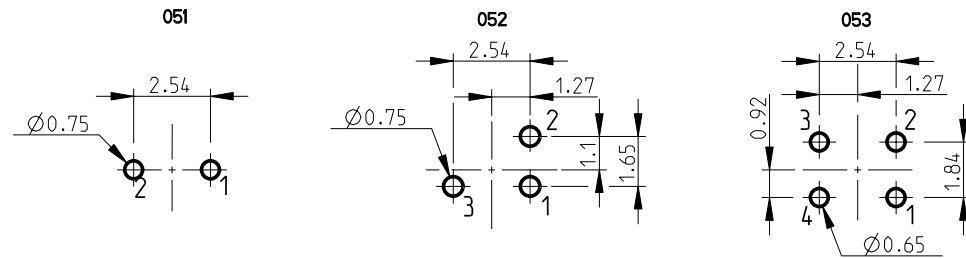


Keying codes (View from F)

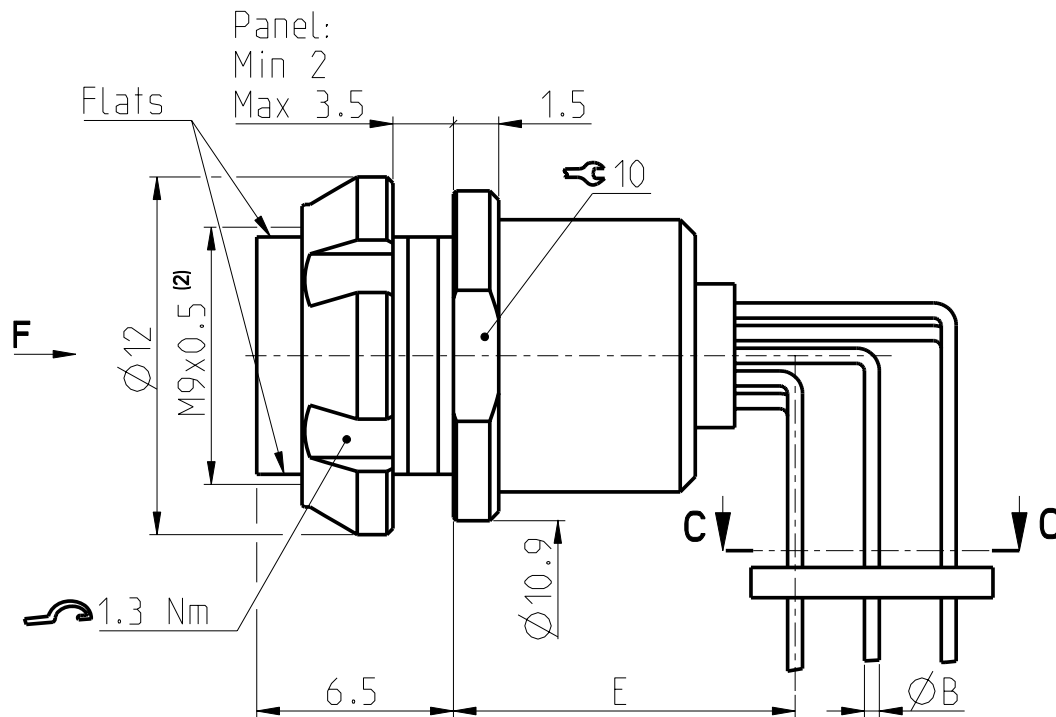
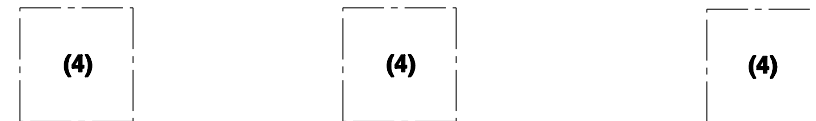


CONTACT CONFIGURATION			Contacts	E	$\varnothing B$
102	A Z	051	2	12.8	0.6
102	A Z	052	3	12.8	0.6
102	A Z	053	4	11.3	0.5

Pin layout / PCB hole pattern for polarities A - View from C ⁽³⁾



Polarities Z - View from C ⁽³⁾



All dimensions in mm

Rev.

Pages

Notes :

- 1) All tolerances resulting from connector assembly are typically $\pm 0.3\text{mm}$
- 2) If receptacle is screwed directly into threaded hole, oversize thread by $+0.05\text{mm}$

3) Recommended PCB hole dimensions may be adjusted to application

4) Please contact us

Part number example: DBPC 102 A056-130

600515

3

1/2

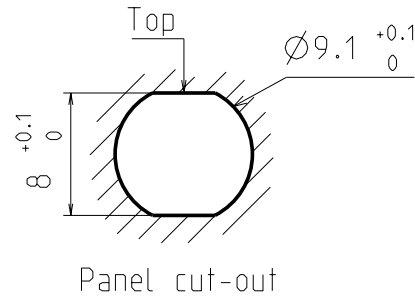
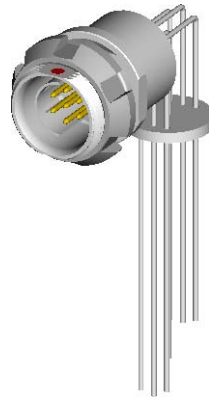
fischer
CONNECTORS

www.fischerconnectors.com

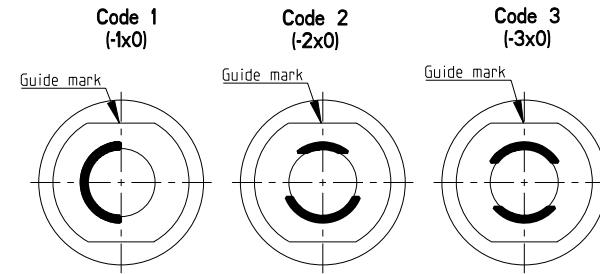
DBPC 102 Multipole Receptacles

Contact polarity A

Contact polarity Z

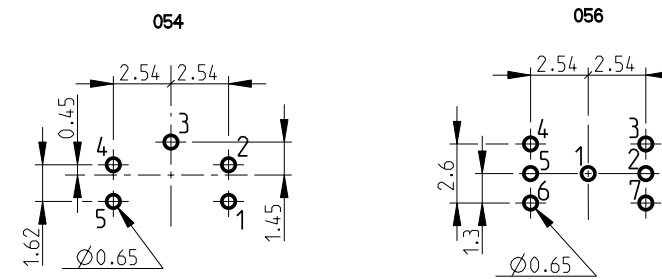


Keying codes (View from F)

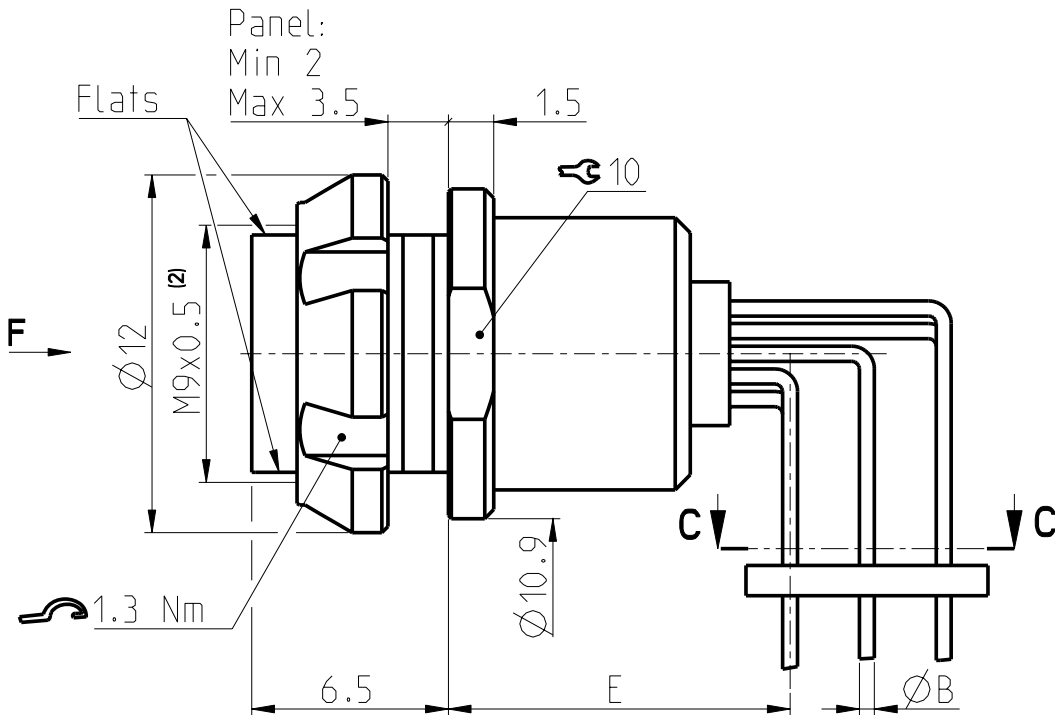
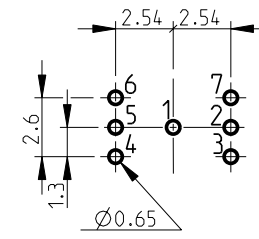
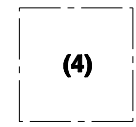


CONTACT CONFIGURATION	Contacts	E	$\varnothing B$
102 A Z 054	5	11.3	0.5
102 A Z 056	7	11.3	0.5

Pin layout / PCB hole pattern for polarities A - View from C (3)



Polarities Z - View from C (3)



All dimensions in mm
600515

Rev. **3**
 Pages **2/2**

Notes:
 1) All tolerances resulting from connector assembly are typically $\pm 0.3\text{mm}$
 2) If receptacle is screwed directly into threaded hole, oversize thread by $+0.05\text{mm}$

3) Recommended PCB hole dimensions may be adjusted to application
 4) Please contact us
 Part number example : DBPC 102 A056-130