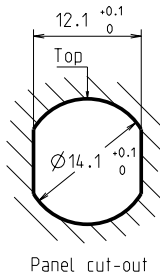
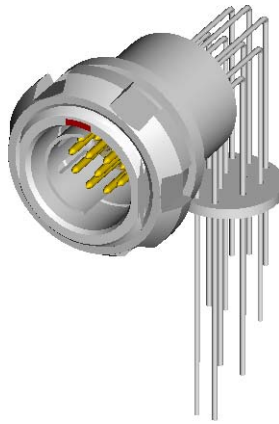


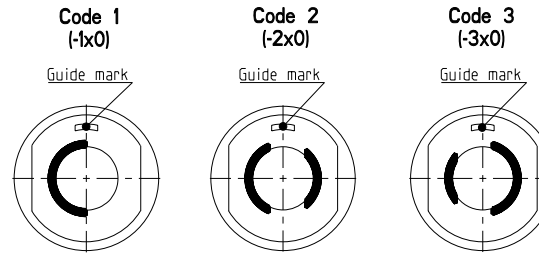
DBPC 1031 Multipole Receptacles

Contact polarity A

Contact polarity Z

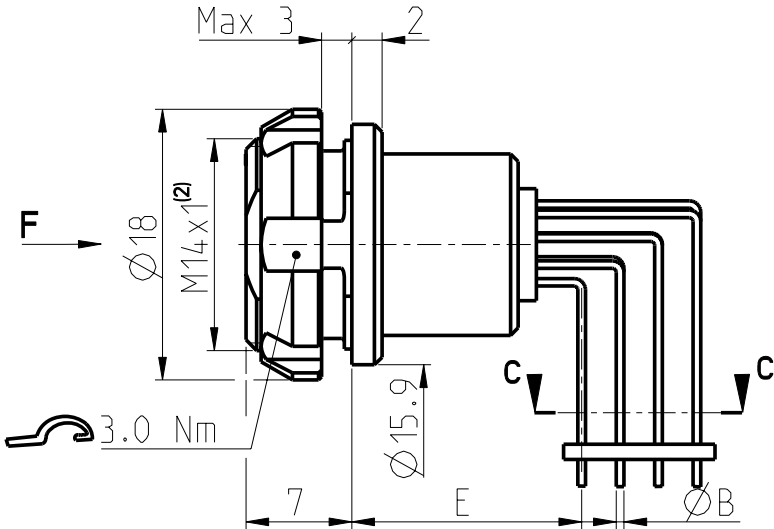


Keying codes (View from F)

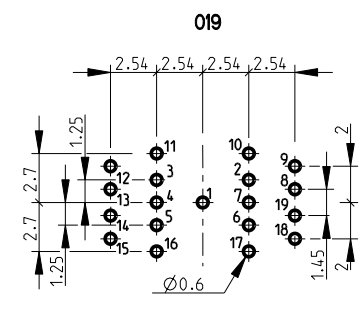
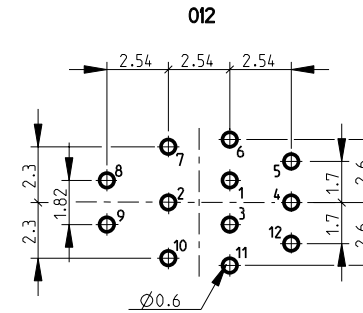
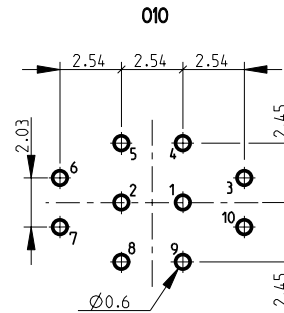


CONTACT CONFIGURATION			Contacts	E	∅B
1031	A	010	10	14.2	0.5
	Z	012	12	14.2	0.5
1031	A	019	19	14.4	0.5
	Z	019	19	14.4	0.5

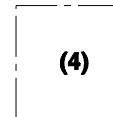
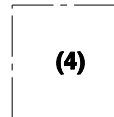
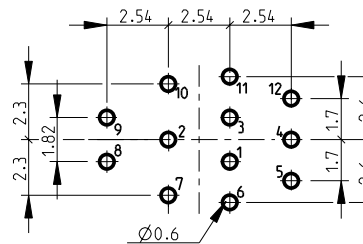
Panel:
Min 2
Max 3



Pin layout / PCB hole pattern for polarities A - View from C (3)



Polarities Z - View from C (3)



All dimensions in mm

Rev.

Pages

Notes :

- 1) All tolerances resulting from connector assembly are typically $\pm 0.3\text{mm}$
- 2) If receptacle is screwed directly into threaded hole, oversize thread by $+0.05\text{mm}$

3) Recommended PCB hole dimensions may be adjusted to application

4) Please contact us

Part number example : DBPC 1031 A019-130

600517

2a

1/1

fischer
CONNECTORS