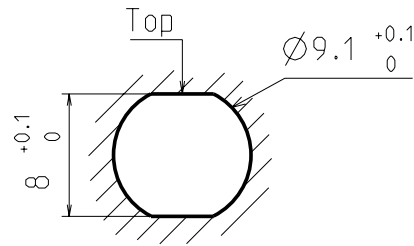


# DBPE/U 102 Multipole Receptacles

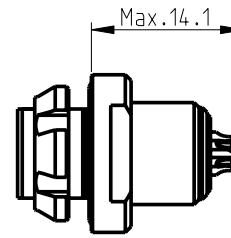
Contact polarity A

Contact polarity Z

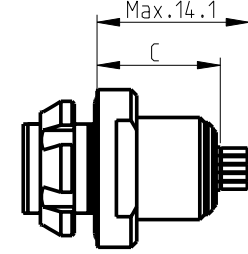


Panel cut-out

All dimensions see note 1)

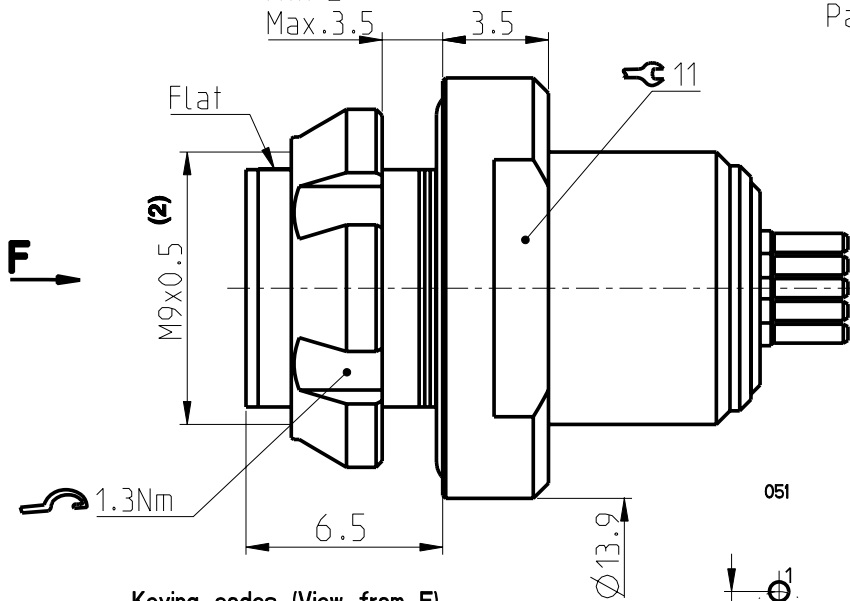


Solder (-x39/-x49)



PCB (-x30/-x40)

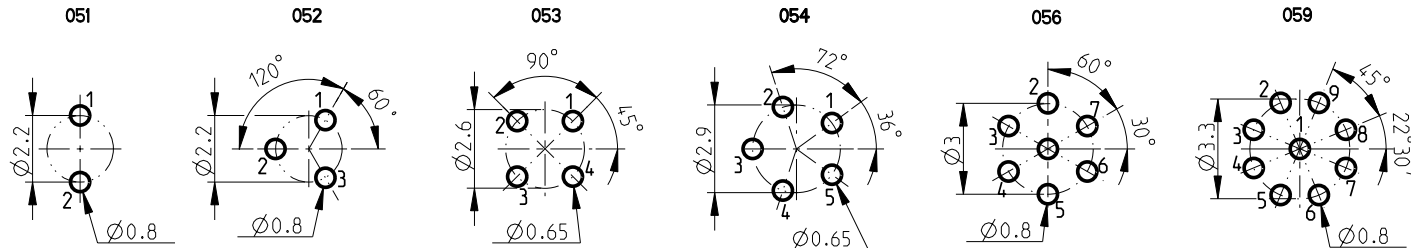
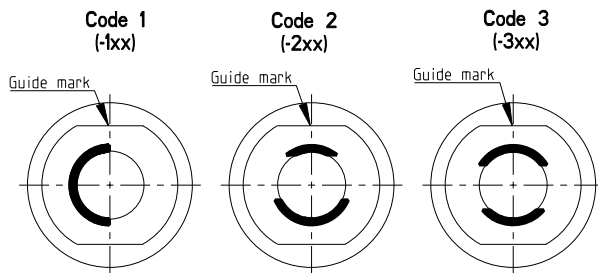
Panel:  
Min.2  
Max.3.5



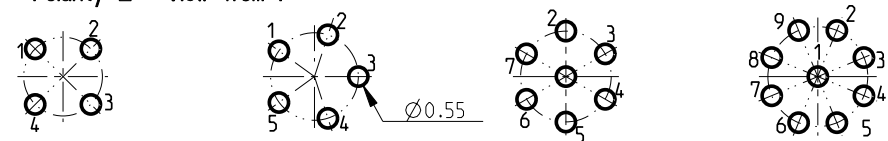
CONTACT CONFIGURATION	Contacts	Solder cup $\varnothing$	C	PIN $\varnothing$
102 A Z 051	2	0.79	11.4 11.6	0.63
102 A Z 052	3	0.79	11.4 11.6	0.63
102 A Z 053	4	0.79	11.4 11.3	0.50
102 A Z 054	5	0.79	11.4 11.3	0.50 0.40
102 A Z 056	7	0.43	10.9 11.1	0.63
102 A Z 059	9	0.43	10.9	0.63

Pin layout / PCB hole pattern for polarity A - View from F (3)

Keying codes (View from F)



Polarity Z - View from F



All dimensions in mm

600473

Rev. 3

Pages 1/1

Notes:  
1) All tolerances resulting from connector assembly are typically  $\pm 0.3$ mm  
2) If receptacle is screwed directly into threaded hole, oversize thread by +0.05mm

3) Recommended PCB hole dimensions may be adjusted to application  
Part number example : DBPE 102 A056-130

**fischer**  
CONNECTORS

www.fischerconnectors.com