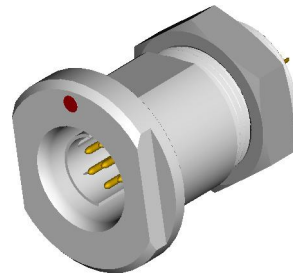
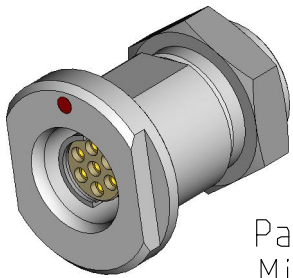


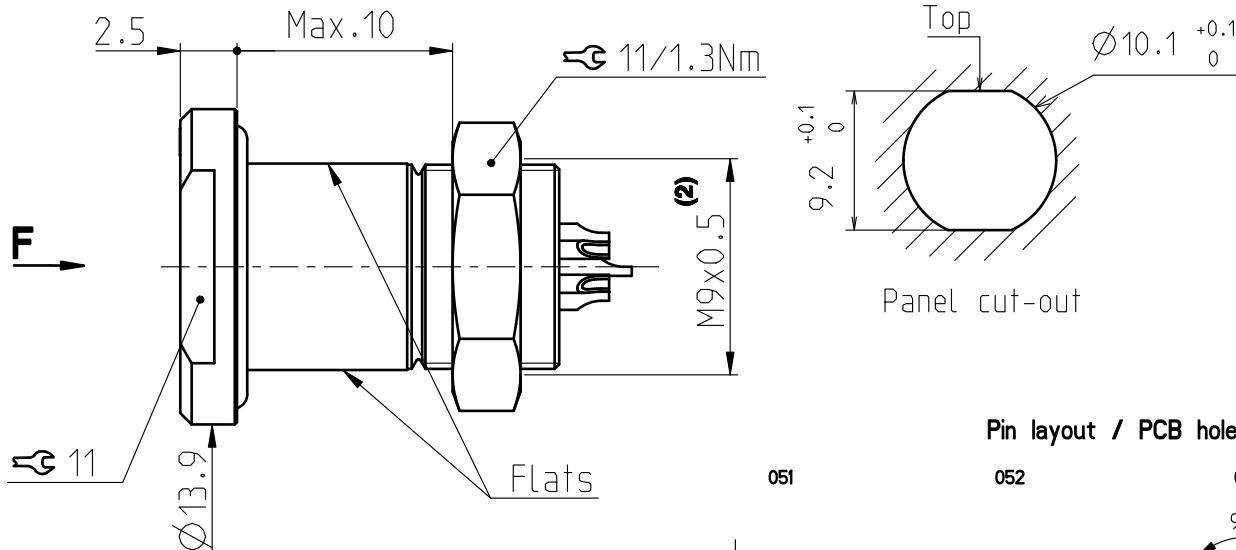
DEE/U 102 Multipole Receptacles

Contact polarity A

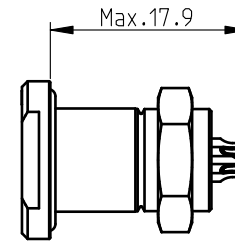
Contact polarity Z



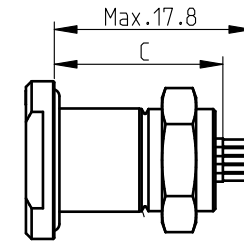
Panel:
Min.8
Max.10



All dimensions see note 1)



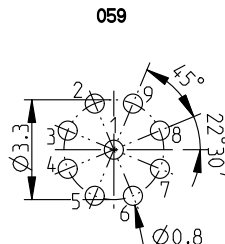
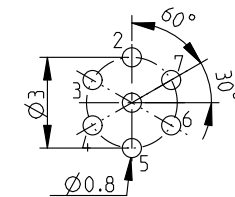
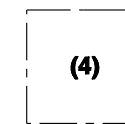
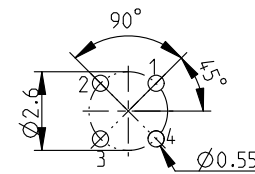
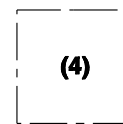
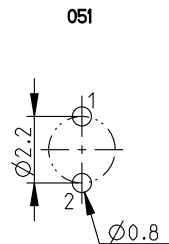
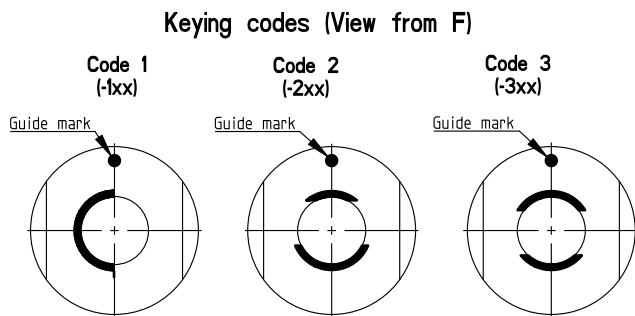
Solder (-x30/-x40)



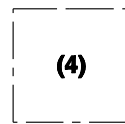
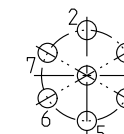
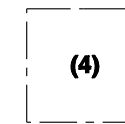
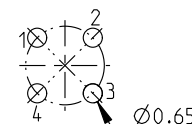
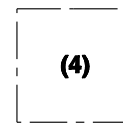
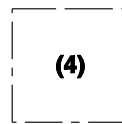
PCB (-x39/-x49)

CONTACT CONFIGURATION	Contacts	Solder cup \varnothing	C	PIN \varnothing
102 A Z 051	2	0.79	15.3	0.63
102 A Z 052	3	0.79	-	-
102 A Z 053	4	0.79	15.4 15.3	0.40 0.50
102 A Z 054	5	0.79	-	-
102 A Z 056	7	0.43	14.8 15.1	0.63
102 A Z 059	9	0.43	14.8	0.63

Pin layout / PCB hole pattern for polarity A - View from F (3)



Polarity Z - View from F



All dimensions in mm

600550

Rev.

1b

Pages

1/1

Notes :

- 1) All tolerances resulting from connector assembly are typically $\pm 0.3\text{mm}$
- 2) If receptacle is screwed directly into threaded hole, oversize thread by $+0.05\text{mm}$

3) Recommended PCB hole dimensions may be adjusted to application

4) Please contact us

Part number example : DEE 102 A056-130

fischer
CONNECTORS

www.fischerconnectors.com