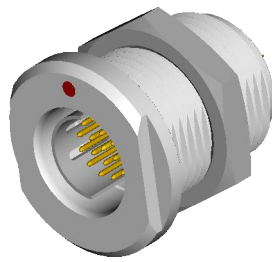
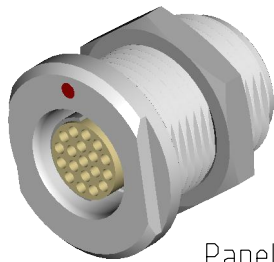


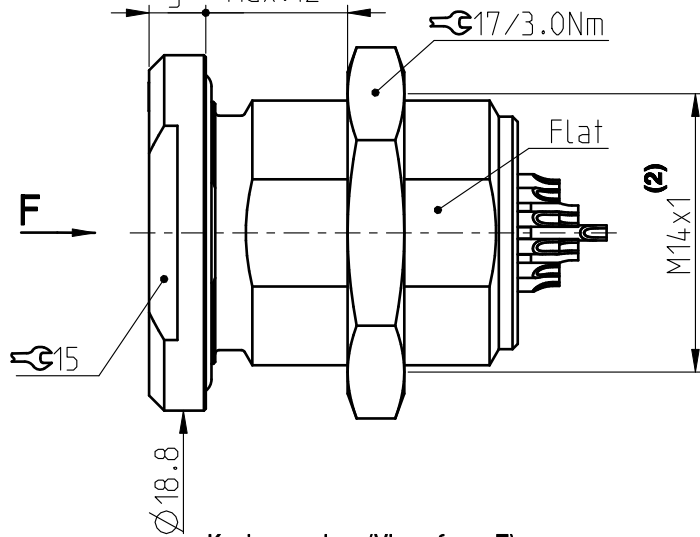
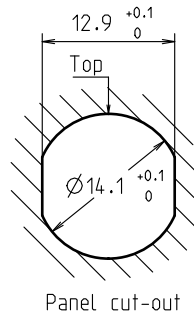
DEE/U 1031 Multipole Receptacles

Contact polarity A

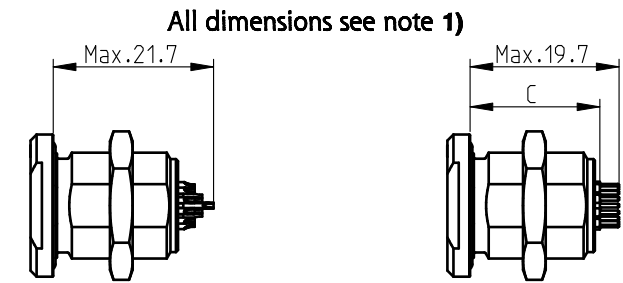
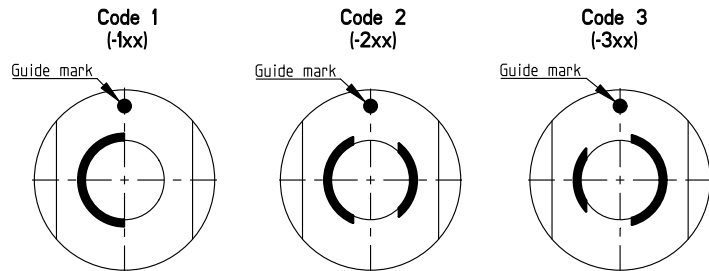
Contact polarity Z



Panel:
Min.0
Max.12



Keying codes (View from F)

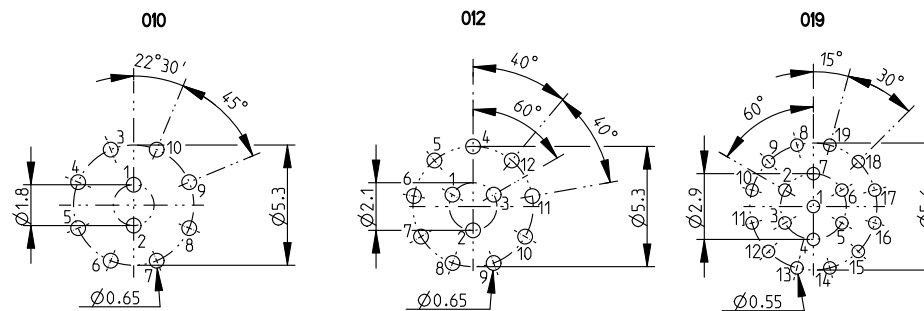


Solder (-x30/-x40)

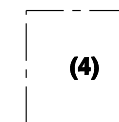
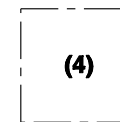
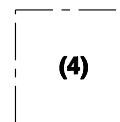
PCB (-x39/-x49)

CONTACT CONFIGURATION	Contacts	Solder cup ϕ	C	PIN ϕ
1031 A Z 010	10	0.79	17.2	0.5
1031 A Z 012	12	0.79	17.2	0.50
1031 A Z 019	19	0.43	17.2	0.40

Pin layout / PCB hole pattern for polarity A - View from F (3)



Polarity Z - View from F



All dimensions in mm

600541

Rev.

4a

Pages

1/1

Notes :

- 1) All tolerances resulting from connector assembly are typically ± 0.3 mm
- 2) If receptacle is screwed directly into threaded hole, oversize thread by $+0.05$ mm

3) Recommended PCB hole dimensions may be adjusted to application

4) Please contact us

Part number example : DEE 1031 A019-130

fischer
CONNECTORS

www.fischerconnectors.com