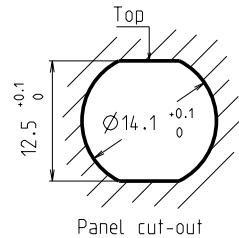
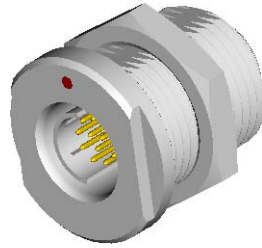
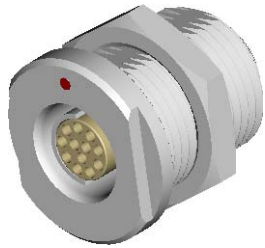


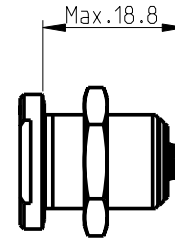
# DEE/U 103 Multipole Receptacles

Contact polarity A

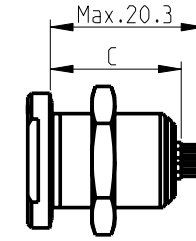
Contact polarity Z



Panel cut-out

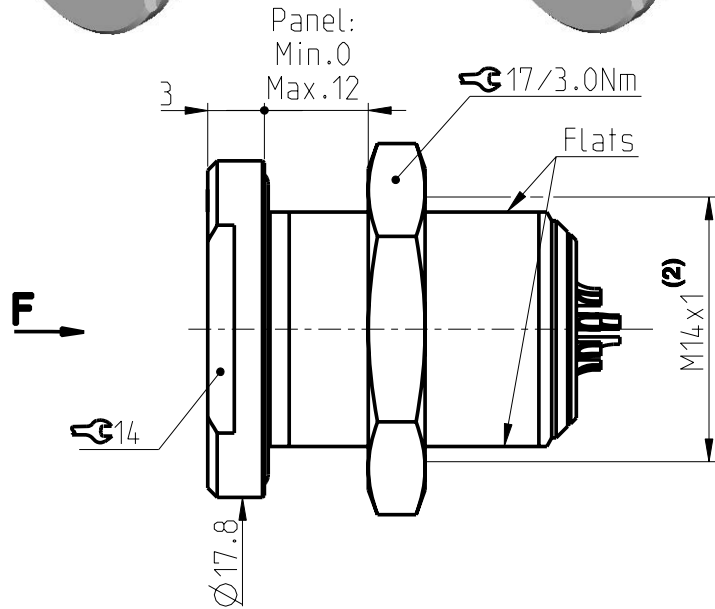


Solder (-x30/-x40)



PCB (-x39/-x49)

All dimensions see note 1)



Panel:  
Min.0  
Max.12

17/3.0Nm

Flats

M14x1  
(2)

17.8

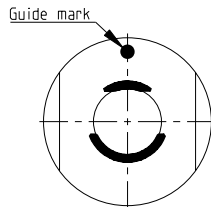
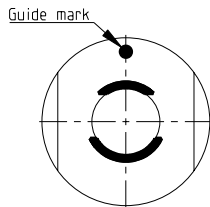
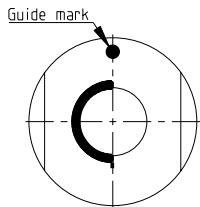
14

Keying codes (View from F)

Code 1  
(-1xx)

Code 2  
(-2xx)

Code 3  
(-3xx)



CONTACT CONFIGURATION	Contacts	Solder cup $\varnothing$	C	PIN $\varnothing$
103 A Z 051	2	1.18	-	-
103 A Z 052	3	1.18	-	-
103 A Z 053	4	0.79	17.3	0.63
103 A Z 054	5	0.79	-	-

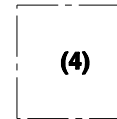
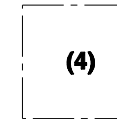
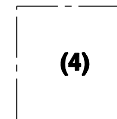
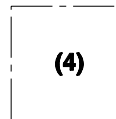
Pin layout / PCB hole pattern for polarity A - View from F (3)

051

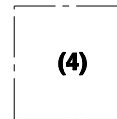
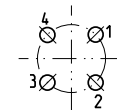
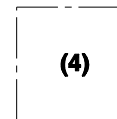
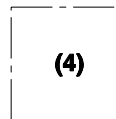
052

053

054



Polarity Z - View from F



All dimensions in mm

Rev.

Pages

Notes :

- 1) All tolerances resulting from connector assembly are typically  $\pm 0.3$ mm
- 2) If receptacle is screwed directly into threaded hole, oversize thread by  $+0.05$ mm

3) Recommended PCB hole dimensions may be adjusted to application

4) Please contact us

Part number example : DEE 103 A062-130

600543

2a

1/2

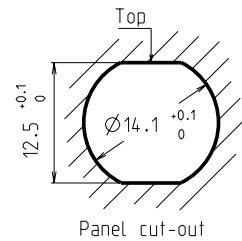
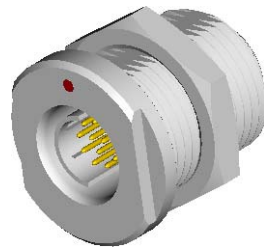
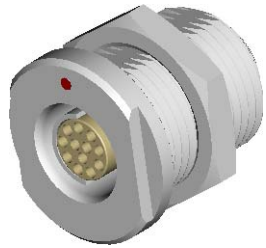
**fischer**  
CONNECTORS

www.fischerconnectors.com

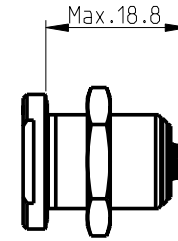
# DEE/U 103 Multipole Receptacles

Contact polarity A

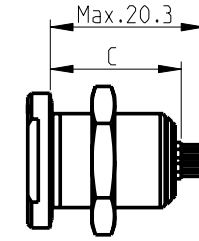
Contact polarity Z



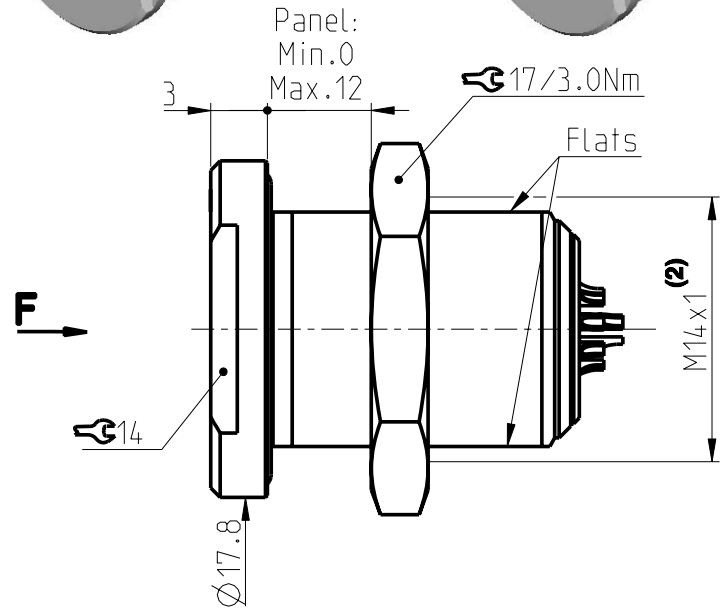
All dimensions see note 1)



Solder (-x30/-x40)

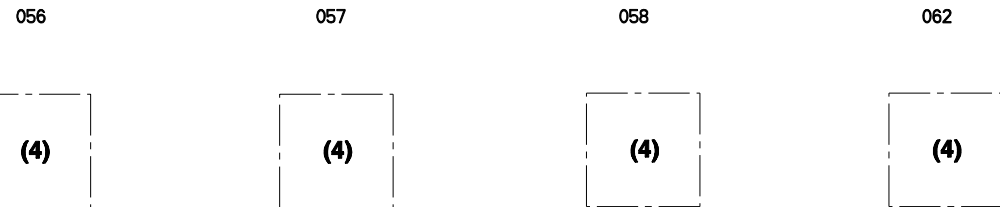


PCB (-x39/-x49)



CONTACT CONFIGURATION	Contacts	Solder cup $\varnothing$	C	PIN $\varnothing$
103 A Z 056	6	0.79	-	-
103 A Z 057	7	0.79	-	-
103 A Z 058	8	0.79	-	-
103 A Z 062	12	0.43	-	-

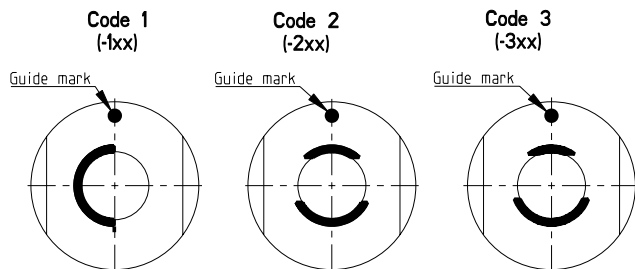
Pin layout / PCB hole pattern for polarity A - View from F (3)



Polarity Z - View from F



Keying codes (View from F)



All dimensions in mm

600543

Rev. Pages

2a 2/2

Notes:  
1) All tolerances resulting from connector assembly are typically  $\pm 0.3$ mm  
2) If receptacle is screwed directly into threaded hole, oversize thread by  $+0.05$ mm

3) Recommended PCB hole dimensions may be adjusted to application  
4) Please contact us  
Part number example : DEE 103 A062-130

**fischer**  
CONNECTORS

www.fischerconnectors.com