



FISCHER LP360™ LED

INCREASED SECURITY, VISIBILITY AND IDENTIFICATION

- Easy mating with LP360™ plug & use technology
- IP68 sealed to 20m/24h
- Lightweight, compact and low-profile



REIMAGINING CONNECTIVITY
TOGETHER

fischer®
CONNECTORS

KEY FEATURES

Plug & use LED utilizing breakthrough LP360™ technological innovations in mating (360° mating freedom, no key code), material (membrane-sealed contacts for easy cleaning as well as protection from dust & sand) and integration (low-

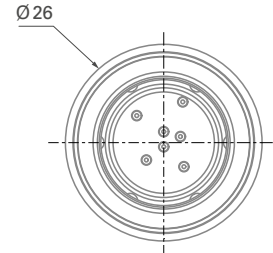
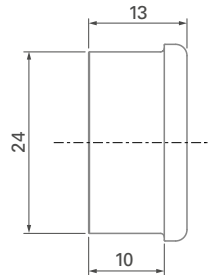
profile, direct panel plug integration into device's housing) for maximum usability, operability and functionality. Also designed to give immediate visual indication for power testing.

AVAILABLE SIZE 1:1

TECHNICAL DIMENSIONS

Fischer LP360™ LED

BODY STYLE	LED
Sealing (mated)	IP68
Locking system	Quick-release
Contact	Spring-loaded
Housing material	Brass
Housing color	Anthracite
Size	14
Weight	24 g



Active Device	Designation	Part No.
LED	-	133353

ENVIRONMENTAL, MECHANICAL & ELECTRICAL DATA

	Performance	Method
Sealing performance (mated)	IP68 20m/24h	MIL-STD-810 Method 512.6
Operating temperature	-55 °C to +85 °C	MIL-STD-810 Method 501.6 and 502.6
Corrosion resistance	1,000 h at 5 % salt and 35 °C	MIL-STD-810G Method 509.6
Vibration	9.26 G _{rms}	MIL-STD-202 Method 214 Condition I
Endurance	10,000 mating cycles 5,000 rotations	IEC 60512-9-1

CONTACT CONFIGURATION

VCC (power)	6
D-	7
D+	2
GND	1

ALSO AVAILABLE





LP360™
USB 2.0 adaptor



LP360™
Rugged Flash Drive

INTERFACES

Fischer Freedom™ Series			
FLR01			
	Designation		Part No.
	Size 14	FLR01WZZ14T007P AN360 V3AC	132506
FLR50			
	Designation		Part No.
	Size 14	CA S 07 FR50Z14B B/OE BRA PURTN	134999



For more information visit
fischerconnectors.com/lp360